



PROPERTY  
SERVICES  
LIMITED



# 108 Shakespeare Street , Coventry, CV2 4NG

Asking Price £295,000



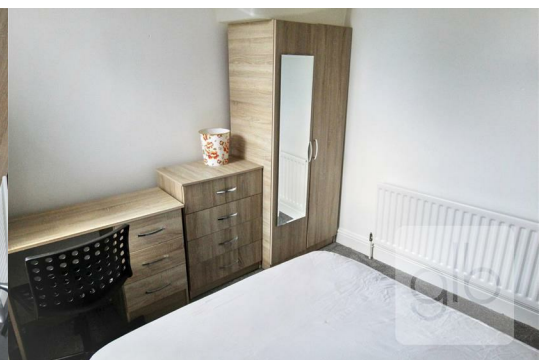
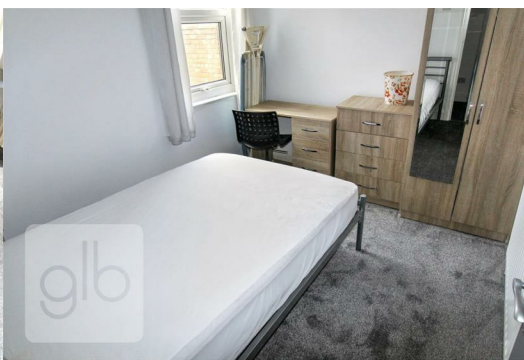
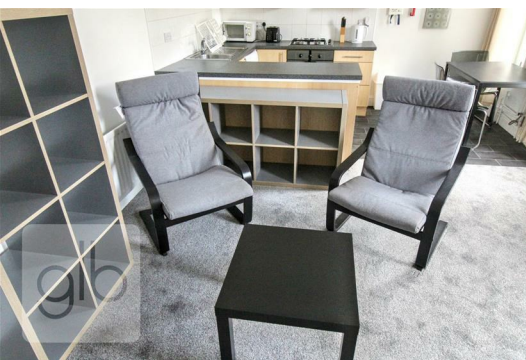
**\*\*INVESTMENT OPPORTUNITY - THIS CONVERTED TERRACED PROPERTY WITH 3 SEPERATE APARTEMENTS (STUDIO, 1 BED & 2 BED) IS AVAILABLE TO PURCHASE WITH AN INCOME OF £2,170PCM\*\***

This converted property comprises of the following,

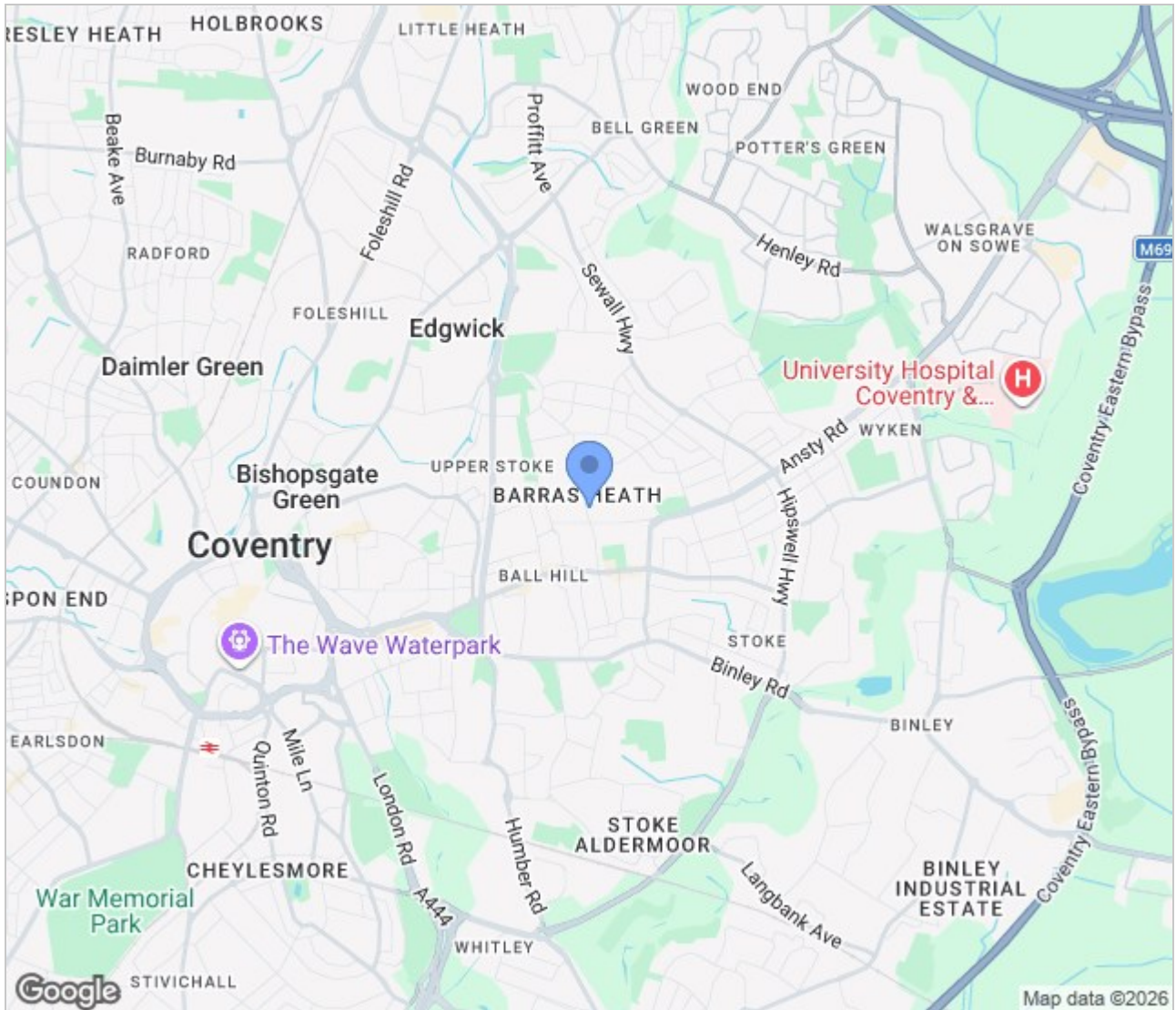
- \* Ground floor one bedroom apartment, with open plan kitchen/lounge area, shower room and double bedroom. The rental income for this apartment is £650.00 (including electric)
- \* Ground floor studio apartment, with a separate kitchen, bedsitting room, and bathroom. The rental income is £725.00 (including electric)
- \* First floor 2 two bedroom apartment, with a large open plan kitchen/lounge, breakfast bar, 2 double bedrooms and bathroom. The rental income for this apartment is £795.00 (including electric)
- \* Large garden to the rear of the property.

The property is freehold, with double glazing throughout and gas central heating.

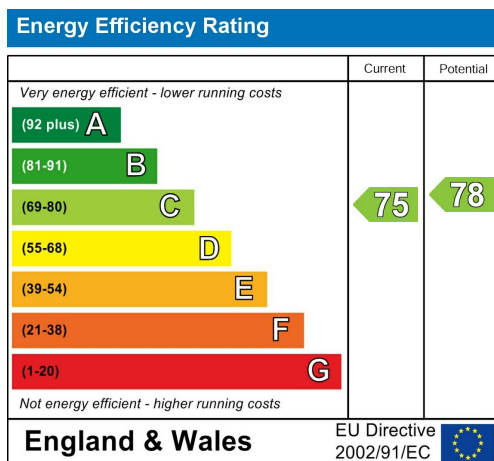
Asking Price of £295,000



## Area Map



## Energy Efficiency Graph



These particulars, whilst believed to be accurate are set out as a general outline only for guidance and do not constitute any part of an offer or contract. Intending purchasers should not rely on them as statements of representation of fact, but must satisfy themselves by inspection or otherwise as to their accuracy. No person in this firm's employment has the authority to make or give any representation or warranty in respect of the property.

GLB Property Services Ltd  
9 Hay Lane  
Coventry, CV1 5RJ

T. 02476 433416

info@glbpropertyservices.com  
www.glbpropertyservices.com

